

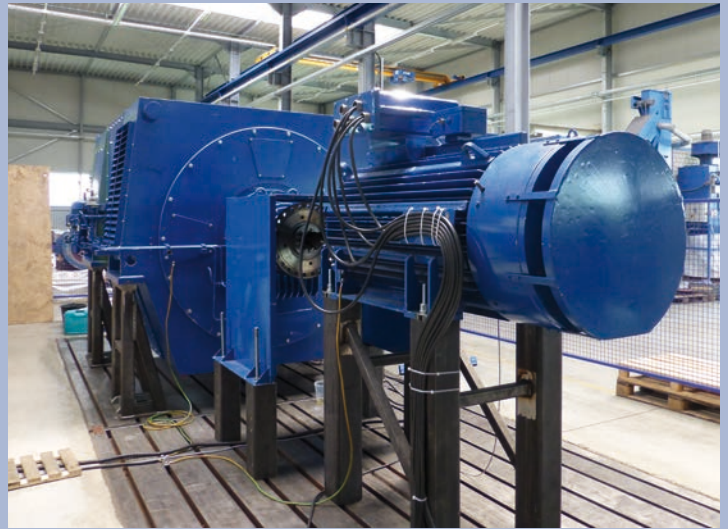
Test field - technical possibilities

PARTZSCH

ELEKTROMOTOREN

From the individual winding to the finished machine, these inspections ensure our high quality standard.

- electrical tests AC/DC
- mechanical tests
- machine tests
- laminated core tests
- special tests
- PD-measurement
- $\tan\delta$ -measurement



Component / Parameter	Properties / Remarks
Test voltage (three-phase)	Low voltage 0-690 V High voltage 3 kV; 6 kV; 10 kV
Test current (three-phase)	2 three-phase systems with each max. 1000 A
Electrical power (three-phase)	1,000 kW
Test voltage (direct current)	≤ 850 V
Test current (direct current)	≤ 500 A
Electrical power (direct current)	≤ 425 kW
Torque (horizontal test bench): at 3,000 min ⁻¹ at 1,500 min ⁻¹ at 750 min ⁻¹	up to 1,000 Nm up to 6,500 Nm up to 30,000 Nm
Torques (vertical test bench): 300 up to 1,200 min ⁻¹	up to 4,000 Nm
Lubricating oil supply	2x 10 l/min 2x 15 l/min 2x 80 l/min
Cooling water supply	2x 30 m ³ /h cooling capacity 300 kW
Crane capacity	~45 t (using 2 cranes)
Hook height	7 m
Machine bed horizontal	Test station 1 → 8 x 3 m
Machine bed vertical	Test station 2 → 6 x 3.25 m
Bearing types	Roller bearing Plain bearing
Vibration measurement	according to EN 60034-14
Noise measurement	including spectrum